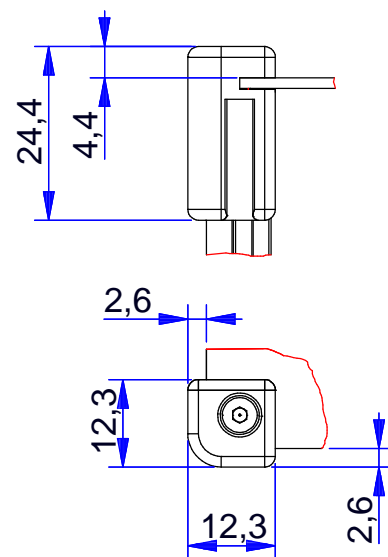


Detail Eckstück




B = \_\_\_\_\_ mm

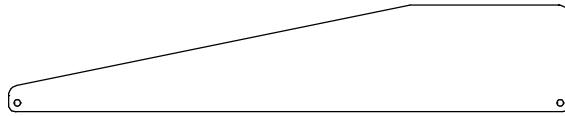
H = \_\_\_\_\_ mm

T1 = \_\_\_\_\_ mm

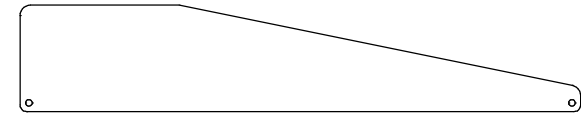
T2 = \_\_\_\_\_ mm

|   |          |       |      |  |            |  |  |
|---|----------|-------|------|--|------------|--|--|
| <br><a href="http://www.WoehrGmbH.de">www.WoehrGmbH.de</a> |          |       |      |  |            | Maßstab: 1:1   | Gewicht:   |
|   |          |       |      |  |            | Schutzvermerk nach DIN 16016 beachten / Freimasstoleranzen nach DIN 7168 mittel<br>Not measured outlines take from the 3D- or dxf-data |  |
|   |          |       |      | Bearb.   | 19.01.2015 | A. Schwarz   | Prioline KSK<br>KD: 169999<br>PULTGEHÄUSE FORM VII KSK |
|   |          |       |      | Gepr.  |            |  |  |
|   |          |       |      | Norm   |            |  |  |
|   |          |       |      | Richard Wöhr GmbH<br>D-75339 Höfen / Enz<br>Richard@WoehrGmbH.de |            |  | Blatt<br>1   |
| Zust.   | Änderung | Datum | Name | Urspr.   | Ers. f:    | Ers. d:  | Bl.<br>BL  |

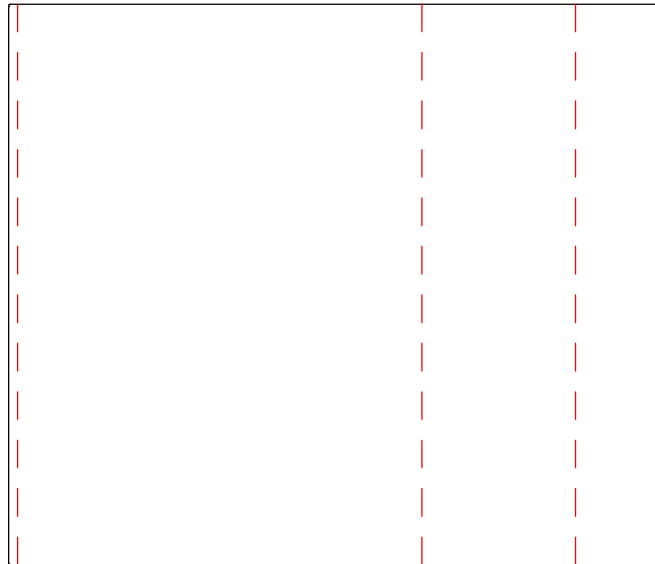
Seitenwand rechts



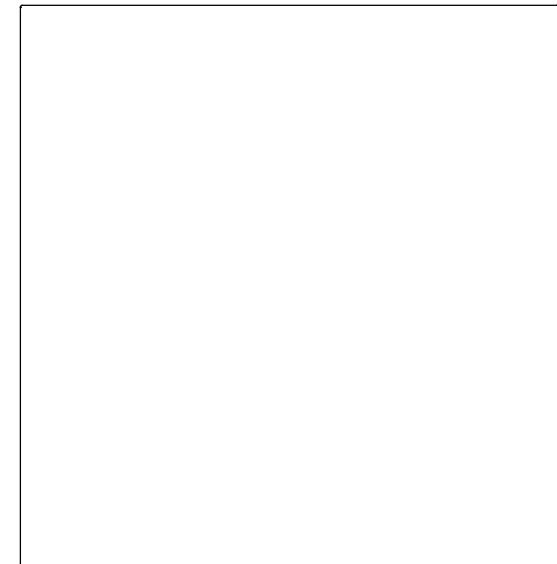
Seitenwand links



Deckblech



Bodenplatte




B = \_\_\_\_\_ mm

H = \_\_\_\_\_ mm

T1 = \_\_\_\_\_ mm

T2 = \_\_\_\_\_ mm

|   |          |       |      |  |            |            |  |            |
|---|----------|-------|------|--|------------|------------|--|------------|
| <br>www.WoehrGmbH.de |          |       |      | Maßstab: 1:2.5   |            | Gewicht:   |  |            |
|   |          |       |      | Schutzvermerk nach DIN 16016 beachten / Freimasstoleranzen nach DIN 7168 mittel<br>Not measured outlines take from the 3D- or dxf-data |            |            |  |            |
|   |          |       |      | Datum  | Name       |            |  |            |
|   |          |       |      | Bearb.   | 19.01.2015 | A. Schwarz |  |            |
|   |          |       |      | Gepr.  |            |            |  |            |
|   |          |       |      | Norm   |            |            |  |            |
|   |          |       |      | Richard Wöhr GmbH  |            |            |  | Blatt<br>1 |
|   |          |       |      | D-75339 Höfen / Enz  |            |            |  |            |
|   |          |       |      | Richard@WoehrGmbH.de   |            |            |  | Bl.<br>1   |
| Zust.   | Änderung | Datum | Name | Urspr.   | Ers. f.:   | Ers. d.:   |  |            |